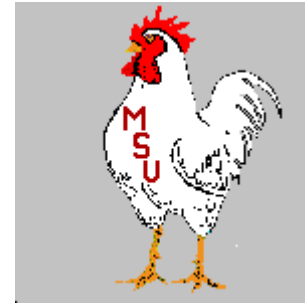


CARE AND INCUBATION OF HATCHING EGGS

Dr. Tom W. Smith, Emeritus Professor of Poultry Science,
Mississippi State University



Novice poultry producers usually become interested in artificial incubation of their own chicks. The success of this type project depends on proper care and incubation of the hatching eggs so healthy, vigorous chicks are produced. The following topics discussed in this publication will help improve the producer's success.

- Selection of Hatching Eggs
- Egg Care and Storage
- Incubators
- Incubating Conditions
- Sanitation
- Troubleshooting Failures

Selection of Hatching Eggs

Most producers set as many eggs as their breeders produce. If incubator space is the limiting factor, it is more profitable to select the better quality eggs for incubating.

A few tips to follow when selecting hatching eggs are:

- Select eggs from breeders that are (1) well developed, mature and healthy; (2) compatible with their mates and produce a high percentage of fertile eggs; (3) are not disturbed much during the mating season; (4) fed a complete breeder diet; and (5) not directly related [brother, sister, mother, father, etc.].
- Avoid excessively large or small eggs. Large eggs hatch poorly and small eggs produce small chicks.
- Avoid eggs with cracked or thin shells. These eggs have difficulty retaining moisture needed for proper chick development. Penetration of disease organisms increase in cracked eggs.
- Do not incubate eggs that are excessively misshapen.

- **Keep only clean eggs for hatching. Do not wash dirty eggs or wipe eggs clean with a damp cloth. This removes the egg's protective coating and exposes it to entry of disease organisms. The washing and rubbing action also serves to force disease organisms through the pores of the shell.**

Egg Care and Storage

Many times a producer carefully attends to the incubation process but disregards the care of the eggs before they are placed in the incubator. Even before incubation starts the embryo is developing and needs proper care. Hatching eggs suffer from reduced hatchability if the eggs are not cared for properly. Listed below are tips to help maintain hatching egg quality.

- 1. Collect eggs at least three times daily. When daily high temperatures exceed 85 degrees F. increase egg collection to five times daily. Collect two or three times in the morning and one or two times in the afternoon.**
- 2. Slightly soiled eggs can be used for hatching purposes without causing hatching problems, but dirty eggs should not be saved. Do not wash dirty eggs.**
- 3. Store eggs in a cool-humid storage area. Ideal storage conditions include a 55 degree F. temperature and 75% relative humidity. Store the eggs with the small end pointed downward.**
- 4. Alter egg position periodically if not incubating within 4-6 days. Turn the eggs to a new position once daily until placing in the incubator.**
- 5. Hatchability holds reasonably well up to seven days, but declines rapidly afterward. Therefore, do not store eggs more than 7 days before incubating. After 3 weeks of storage, hatchability drops to almost zero. Plan ahead and have a regular hatching schedule to avoid storage problems and reduced hatches.**
- 6. Allow cool eggs to warm slowly to room temperature before placing in the incubator. Abrupt warming from 55 degrees to 100 degrees causes moisture condensation on the egg shell that leads to disease and reduced hatches.**

Incubators

The size and type of incubator selected depends on the needs and future plans of each producer. Many different models are available. For continuous settings, separate incubator and hatcher units are recommended. If all eggs in the unit are at the same stage of incubation, a single unit can be used.

Locate the incubator and hatcher units indoors to protect them from major weather changes. It is essential that the room has a good ventilation system to supply plenty of fresh air. Keeping the units indoors makes it easier to maintain uniform temperature and humidity.

There are basically two types of incubators available, *forced-air* and *still-air* incubators. Forced-air incubators have fans that provide internal air circulation. The capacity of these units may be very large. The still-air incubators are usually small without fans for air

circulation. Air exchange is attained by the rise and escape of warm, stale air and the entry of cooler fresh air near the base of the incubator. Recommended temperatures vary between the two incubators, so follow the manufacturer's recommendation that accompany the units.

Incubating Conditions

Poor results are most commonly produced with improper control of temperature and/or humidity. Improper control means that the temperature or humidity is too high or too low for a sufficient length of time that it interferes with the normal growth and development of the embryo. Poor results also occur from improper ventilation, egg turning and sanitation of the machines or eggs.

Obtain the best hatch by keeping the temperature at 100 degrees F. throughout the entire incubation period when using a forced-air incubator. Minor fluctuations (less than $\frac{1}{2}$ degree) above or below 100 degrees are tolerated, but do not let the temperatures vary more than a total of 1 degree. Prolonged periods of high or low temperatures will alter hatching success. High temperatures are especially serious. A forced-air incubator that is too warm tends to produce early hatches. One that runs consistently cooler tends to produce late hatches. In both cases the total chicks hatched will be reduced.

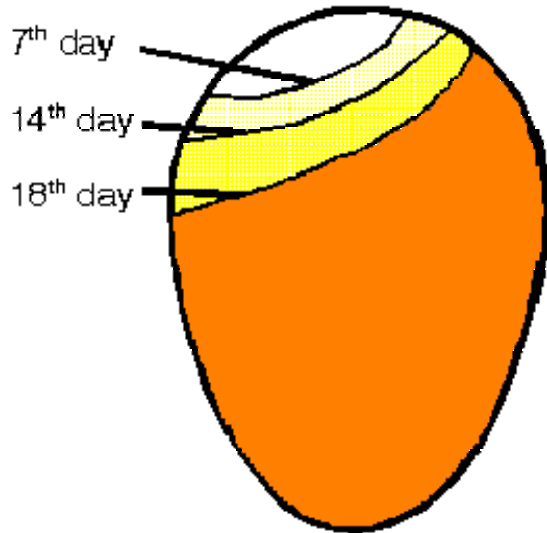
Maintain a still-air incubator at 102 degrees F. to compensate for the temperature layering within the incubator. Obtain the proper temperature reading by elevating the bulb of the thermometer to the same height as the top of the eggs when the eggs are laying horizontal. If the eggs are positioned in a vertical position, elevate the thermometer bulb to a point about $\frac{1}{4}$ - to $\frac{1}{2}$ -inch below the top of the egg. The temperature is measured at the level where the embryos develop (at the top of the egg). Do not allow the thermometer's bulb to touch the eggs or incubator. Incorrect readings will result.

Check the thermometer! Is it accurate? An error of one degree for 21 days can seriously interfere with embryonic growth. Check the incubator thermometer's accuracy by placing the bulb next to the bulb of a clinical (the kind used to measure body temperature) or good laboratory thermometer. Hold both under lukewarm tap water and compare the readings. Compensate for any variation of the incubating thermometer by increasing or decreasing by the amount of variation. A thermometer with a split or gapped mercury column will not give an accurate reading, discard it.

Humidity is carefully controlled to prevent unnecessary loss of egg moisture. The relative humidity in the incubator between setting and three days prior to hatching should remain at 58-60% or 84-86 degree F., wet-bulb. When hatching, the humidity is increased to 65% relative humidity or more.

An excellent method to determine correct humidity is to candle the eggs at various stages of incubation. The normal size of the air cell after 7, 14, and 18 days of incubation for a chicken egg is shown. Necessary humidity adjustments can be made as a result of the

candling inspection. The egg's weight must decrease by 12% during incubation if good hatches are expected.



Size of air cell on 7th, 14th and 18th day of incubation

Frequently there is confusion as to how the measurement of humidity is expressed. Most persons in the incubator industry refer to the level of humidity in terms of degrees F., (wet-bulb) rather than percent relative humidity. The two terms are interconvertible and actual humidity depends upon the temperature (F.) as measured with a dry-bulb thermometer. Conversion of the two humidity measurements can be made using the following table:

Wet-Bulb Values For Four (dry-bulb) Incubation Temperatures				
<u>Relative Humidity</u>	<u>99°</u> ¹	<u>100°</u>	<u>101°</u>	<u>102°</u>
45	80.5	81.3	82.2	83.0
50	82.5	83.3	84.2	85.0
55	84.5	85.3	86.2	87.0
60	86.5	87.3	88.2	89.0
65	88.0	89.0	90.0	91.0

70	89.7	90.7	91.7	92.7
----	------	------	------	------

¹ *Dry-bulb temperatures are shown horizontally for common incubation values.*

Rarely is the humidity too high in properly ventilated still-air incubators. The water pan area should be equivalent to one-half the floor surface area or more. Increased ventilation during the last few days of incubation and hatching may necessitate the addition of another pan of water or a wet sponge. Humidity is maintained by increasing the exposed water surface area.

Ventilation is very important during the incubation process. While the embryo is developing, oxygen enters the egg through the shell and carbon dioxide escapes in the same manner. As the chicks hatch, they require an increased supply of fresh oxygen. As embryos grow, the air vent openings are gradually opened to satisfy increased embryonic oxygen demand. Care must be taken to maintain humidity during the hatching period. Unobstructed ventilation holes, both above and below the eggs, are essential for proper air exchange.

What must be done if the power goes off during incubation? A proper response depends on several factors, some of which include the temperature of the room in which the incubator is located, the number of eggs in the machine, and whether the eggs are in the early or late stage of incubation.

The two most important considerations in this situation are to (1) keep the eggs from overheating and (2) be sure they have an adequate oxygen supply. The longer the eggs incubate and the greater the number of eggs in the incubator, the greater the chance that you will experience overheating and suffocation of the embryos.

If the room in which the incubator is located is hot and stuffy, you will have to react more quickly to power outages than if the room is kept at 75 degrees and is well ventilated. The most effective guard against overheating and suffocation is to open the door of the incubator or hatcher. Whether the door is opened slightly or fully and the length of time it is left open depends on the factors mentioned earlier.

Eggs must be turned at least 4-6 times daily during the incubation period. Do not turn eggs during the last three days before hatching. The embryos are moving into hatching position and need no turning. Keep the incubator closed during hatching to maintain proper temperature and humidity. The air vents should be almost fully open during the latter stages of hatching.

The eggs are initially set in the incubator with the large end up or horizontally with the large end slightly elevated. This enables the embryo to remain oriented in a proper position for hatching. Never set eggs with the small end upward.

In a still-air incubator, where the eggs are turned by hand, it may be helpful to place an "X" on one side of each egg and an "O" on the other side, using a pencil. This serves as an aide to determine whether all eggs are turned. When turning, be sure your hands are free of all greasy or dusty substances. Eggs soiled with oils suffer from reduced hatchability. Take extra precautions

when turning eggs during the first week of incubation. The developing embryos have delicate blood vessels that rupture easily when severely jarred or shaken, thus killing the embryo.

The following table lists incubation requirements for various species of fowl.

<u>Species</u>	<u>Incub. Period (days)</u>	<u>Temp (F.)¹</u>	<u>Humidity (F.)²</u>	<u>Do not turn after</u>	<u>Humidity Last 3 days²</u>	<u>Open vent more</u>
Chicken	21	100	85-87	18th day	90	18th day
Turkey	28	99	84-86	25th day	90	25th day
Duck	28	100	85-86	25th day	90	25th day
Muscovy Duck	35-37	100	85-86	31st day	90	30th day
Goose	28-34	99	86-88	25th day	90	25th day
Guinea Fowl	28	100	85-87	25th day	90	24th day
Pheasant	23-28	100	86-88	21st day	92	20th day
Peafowl	28-30	99	84-86	25th day	90	25th day
Bobwhite Quail	23-24	100	84-87	20th day	90	20th day
Coturnix Quail	17	100	85-86	15th day	90	14th day
Chukar	23-24	100	81-83	20th day	90	20th day

Grouse	25	100	83-87	22nd day	90	21th day
Pigeon	17	100	85-87	15th day	90	14th day

¹ Measured at degrees F. in a forced-air incubator. For still-air incubators, add 2-3 degrees F.

² Measured as degrees F. using a wet-bulb thermometer. Use chart to convert to relative humidity.

Sanitation

In large commercial incubators, eggs of different ages are often set and each setting transferred to a separate unit prior to hatching. Separate hatching units permit proper sanitation and disease control measures to be practiced between batches of chicks. The chicks can be hatched without disturbing the other incubating eggs.

Thoroughly clean and disinfect the incubator and hatcher before each usage. Remove all egg shells, down, dust, and extra material with a broom or vacuum. Wash the unit with a warm detergent solution and rinse with a disinfectant solution. When dry, turn the units on and bring to proper temperature and humidity conditions prior to filling with eggs.

A thorough cleaning job results in a 95-99% improvement in disease control. When done properly, little or no disinfectant is needed. If a disinfectant is used, quaternary ammonia is the most commonly used disinfectant for equipment like incubators and hatching trays. "Quats" are relatively non-irritating, non-corrosive, of low toxicity, and is reasonably effective in the presence of organic matter. Since the incubator and its components should be clean and free of organic matter before disinfectant application, quats are a good choice.

Fumigation is another tool for disease control and is something good to turn to when either the cleaning is poor, eggs are dirty, or machines are filled with eggs and it is difficult to empty and clean properly. The fumigation process can be hazardous to the producer if not conducted carefully. Contact the Poultry Extension Department at Mississippi State University or your local County Agent's office for additional information on properly fumigating incubators and hatching eggs.

Trouble Shooting Failures

The novice poultry producer will usually encounter problems when incubating the first batches of eggs. Fortunately, causes for most failures can be diagnosed and corrected. A separate diagnosis chart has been prepared to assist in solving incubation failures. Refer to this chart at <http://www.msstate.edu/dept/poultry/trouble.htm>.

Additional information on poultry production can be obtained by contacting the e-mail address shown below or the Poultry Extension Department, Box 9665, Mississippi State, MS 39762 - (662) 325-2853.

Good Luck with your egg hatching project.
